

KDA-DWR Report

Official Review of a Water Conservation Area (WCA)

Circle Land & Cattle WCA; Finney, KS

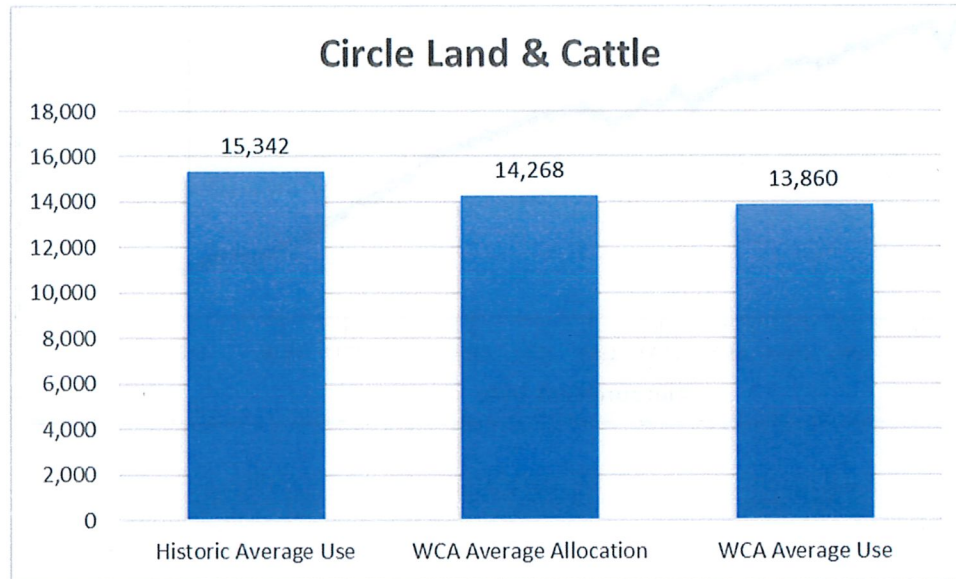
January 2018 through December 2022

Review of Total Water Use of Water Rights Enrolled:

During the term of this WCA, water use was limited to 71,340 acre-feet (AF) for Irrigation use. The total water use reported annually, under the listed water rights, during the term of this WCA are as follows:

2018 Water Use (AF)	2019 Water Use (AF)	2020 Water Use (AF)	2021 Water Use (AF)	2022 Water Use (AF)	Total WCA Water Use (AF)	Unused WCA Water Allocation (AF)	Total WCA Limit (AF)
13,457	13,407	14,531	13,532.9	14,374.26	69,301	2,037.87	71,340

The total average use during this WCA was 13,860 acre-feet.



Review of Corrective Control Provisions:

This WCA had 68 Irrigation wells and 1 Stockwatering well within its geographic boundaries. The WCA was for corrective controls on the irrigation use only. The only requested flexibilities included a multi-year allocation of the irrigation use and the ability to use any irrigation well for stockwatering purposes, provided that a term permit is filed. There was not a need to supplement the stockwater use.

As of the end of 2022 calendar year, no adverse impacts have been noted and no concerns were received from nearby well/landowners.

Review of Compliance Monitoring and Enforcement:

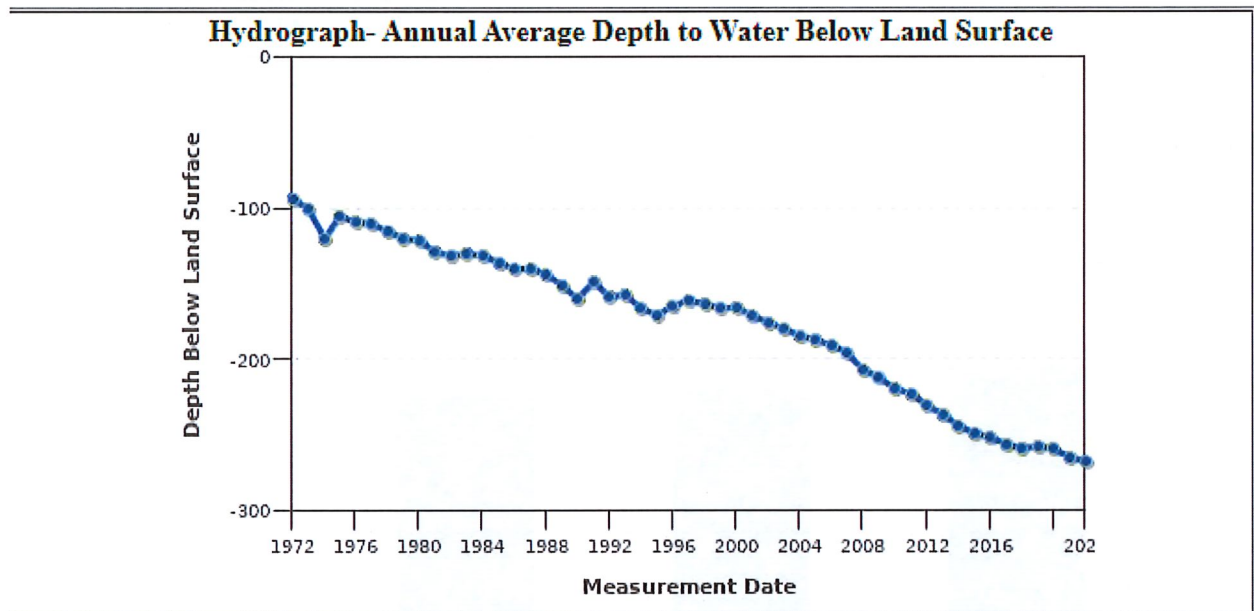
During the period of this WCA, there were no compliance issues relating to the water rights and corrective controls of the management plan. One well minimally exceeded the annual authorized quantity due to accounting errors.

Review of Water Level Changes:

Below are the nearby observation wells documented in the management plan. Note that the measurements were taken annually in the early calendar months.

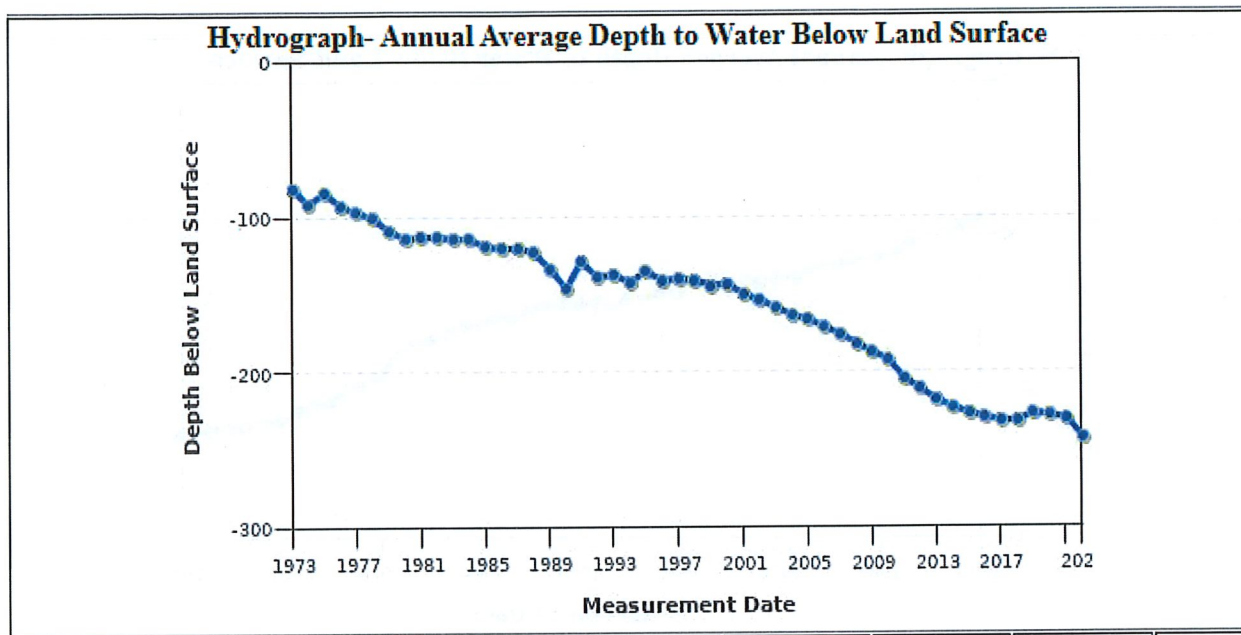
Location:
15DAC-25S-33W

Note that depth to water is feet below land surface and all measurements for the well are included.



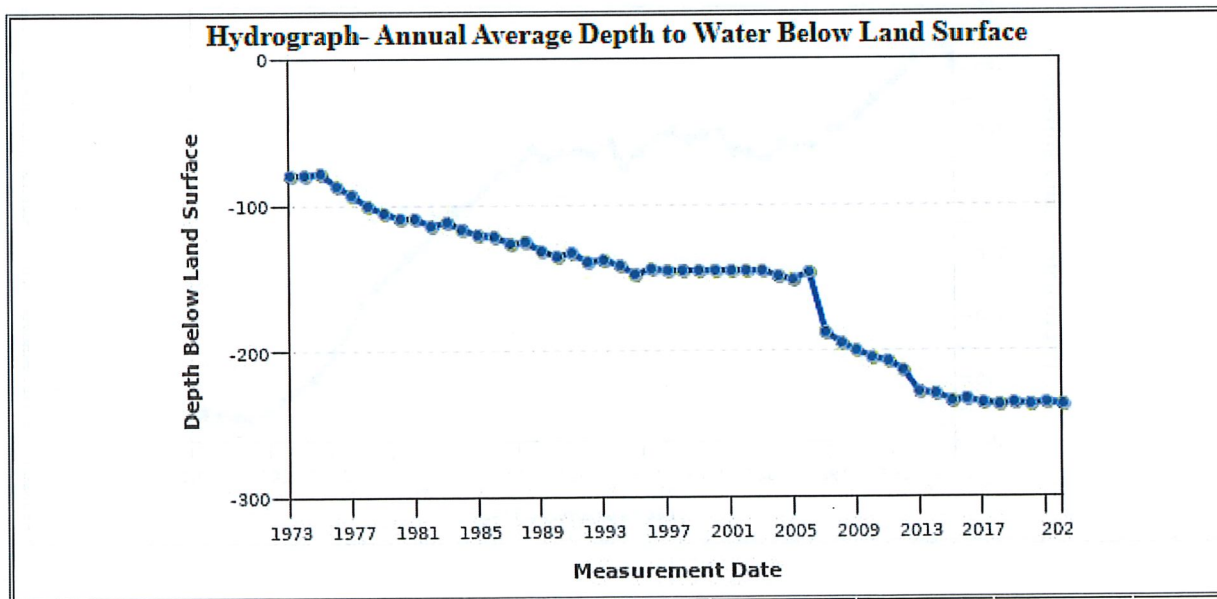
Location:
09ABD-25S-33W

Note that depth to water is feet below land surface and all measurements for the well are included.



Location:
05ABD-25S-33W

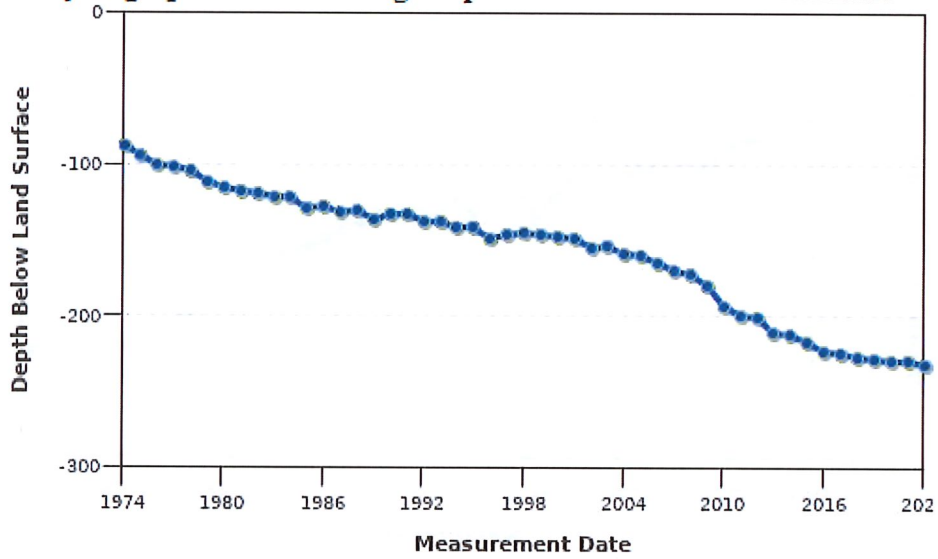
Note that depth to water is feet below land surface and all measurements for the well are included.



Location:
34CAC-24S-33W

Note that depth to water is feet below land surface and all measurements for the well are included.

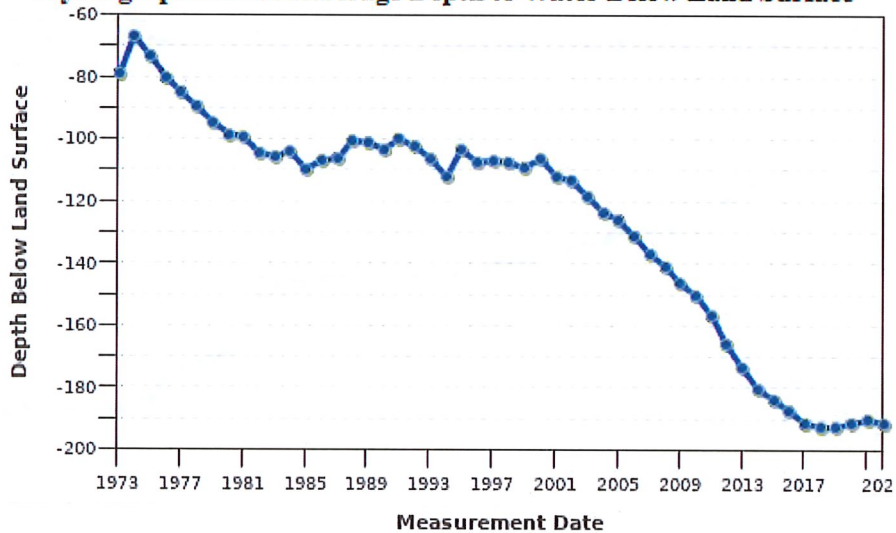
Hydrograph- Annual Average Depth to Water Below Land Surface



Location:
28DAA-24S-33W

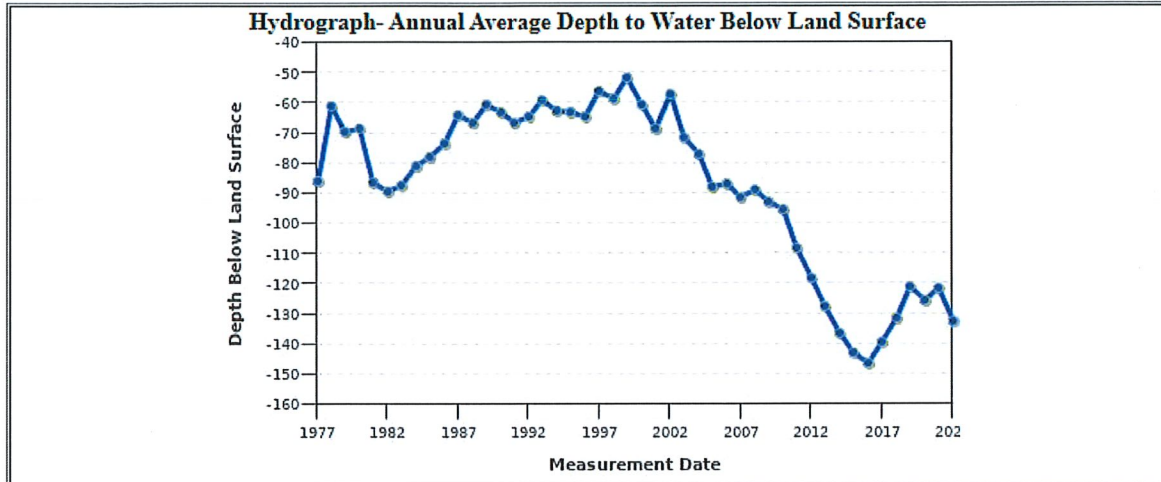
Note that depth to water is feet below land surface and all measurements for the well are included.

Hydrograph- Annual Average Depth to Water Below Land Surface



Location:
09CCD-24S-33W

Note that depth to water is feet below land surface and all measurements for the well are included.



Review of Economic Impacts:

No official economic reports have been published at this time.

Review of Public Interest:

The WCA has conserved water, thereby extended the useable life of the Ogallala Aquifer in the Regional area and served the public interest.

Summary of Review by KDA-DWR:

It is determined that this WCA has met its goals throughout the designated term. This WCA conserved an additional 2% of its WCA allocation; thereby saving water beyond the agreed original WCA reduction. The owners of this WCA met all requirements of the WCA Consent Agreement and Order. In summary, we see no need to deny a request from the owner(s), should they request another WCA for another term.

